

Skagit County Planning Commission  
January 6, 2015

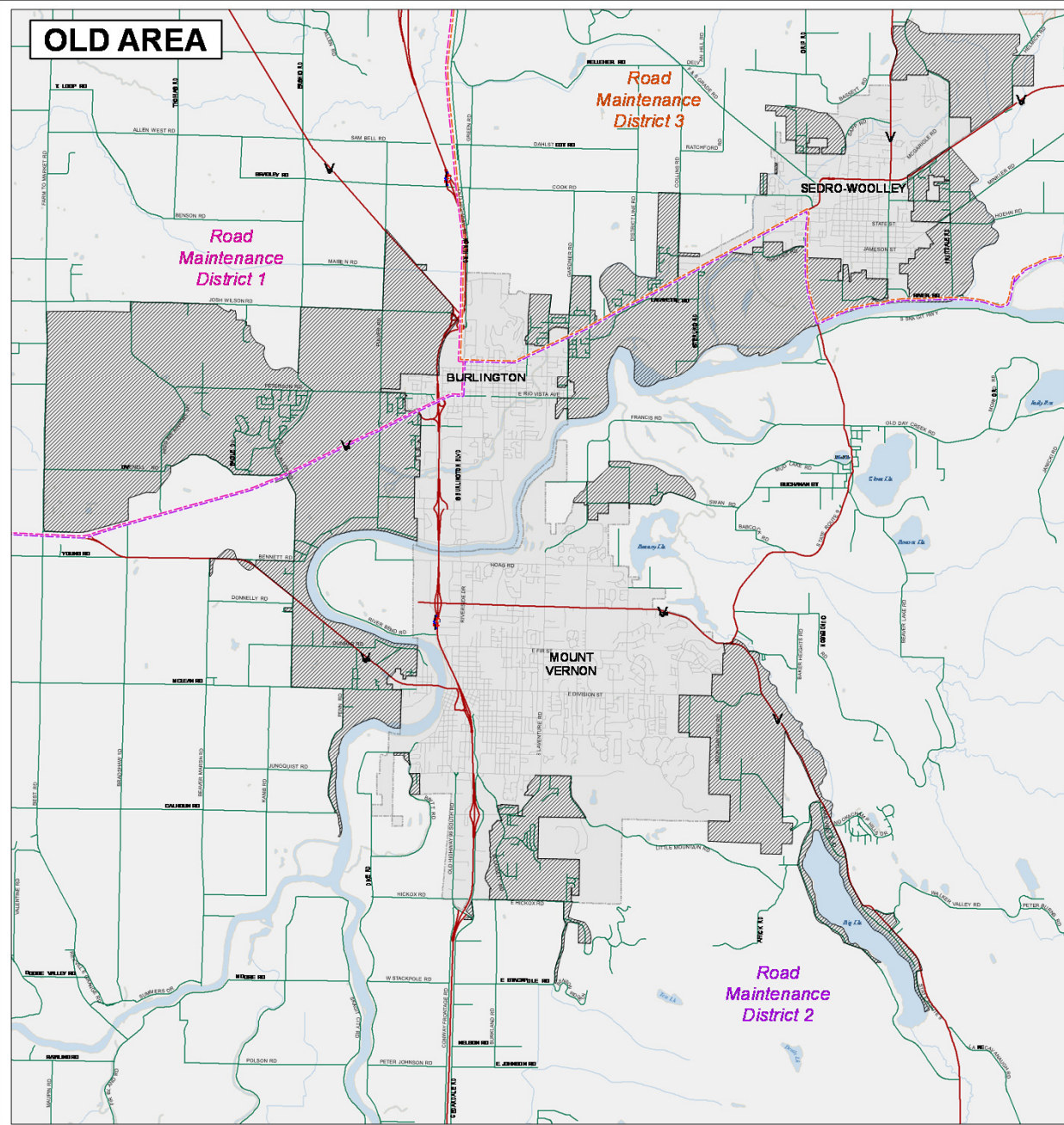
# 2012 STORMWATER PERMIT REQUIREMENTS

# Basis of Stormwater Permits

- 1948- Federal Water Pollution Control Act
- 1972- Federal Clean Water Act
- 1945- RCW 43.54 Water Pollution Control
- 1987- RCW 90.48 Water Pollution Control
- 2007- Ecology- Phase II National Pollutant Discharge Elimination System Permit (NPDES)
- 2012- Ecology issued new Phase II permit
- 6/30/2016- final product and reports due

# Stormwater Permit Boundary

- “For all counties....the geographic area of coverage is the urbanized areas and urban growth areas associated with permitted cities....”
- Boundary set by Ecology based on Census population
- Revised from 2007 permit
- County petitioned to remove Ag-NRL land from permit boundary; Ecology agreed
- Cities have their own permits

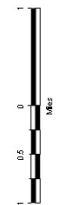


**OLD AREA**

- Legend**
- Map 1011
  - Current NPDES Coverage Area Boundary
  - Proposed NPDES Coverage Area Boundary
  - Road Maintenance District 1
  - Road Maintenance District 2
  - Road Maintenance District 3
  - City Limits
  - Watercourse
  - State-maintained Highways
  - County Roads
  - City Roads
  - Public Roads
  - City Utility Right-of-Way - 140' R/W

The current NPDES Coverage Area Boundary includes the City of Sedro-Woolley, the City of Burlington, and the City of Mount Vernon. The proposed NPDES Coverage Area Boundary includes the City of Sedro-Woolley, the City of Burlington, and the City of Mount Vernon. The proposed NPDES Coverage Area Boundary is subject to change based on future developments and changes in the NPDES program.

**Old NPDES Coverage Areas**



Created by Skagit County GIS  
 Copyright © 2011 Skagit County  
 January 9, 2011

- Legend
- Map Date
  - Current NPDES Coverage Area Boundary
  - Proposed NPDES Coverage Area Boundary
  - Road Maintenance District 1
  - Road Maintenance District 2
  - Road Maintenance District 3
  - City Limits
  - Water Area
  - Intersected Highways
  - County Roads
  - City Roads
  - Public Roads
  - Mapping Symbols - LRS 08

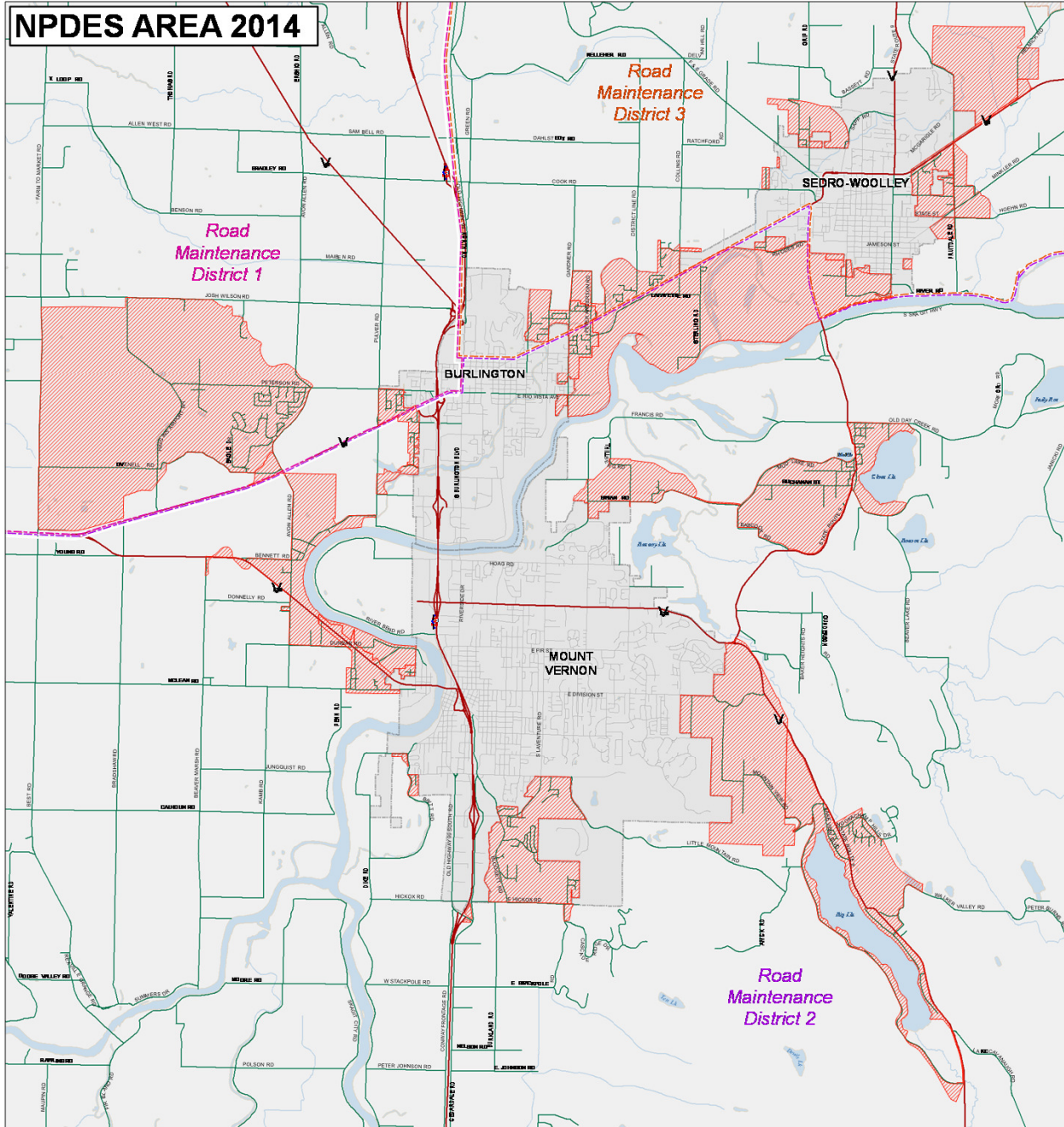
The current NPDES Coverage Area Boundary within the label boundary approved by Washington State Department of Ecology

The proposed NPDES Coverage Area Boundary within the label boundary is only a preliminary boundary and is subject to change. The Department of Ecology will be notified as to whether the County has an approved boundary or if a boundary change is required.

## Current NPDES Coverage Areas



Created by Shagit County  
 Drawing by: 11/01/2010 09:58 AM  
 Job: 10117 7/2011



# Exemptions- Appendix 1

- ⦿ **Forest Practices** regulated by Title 222 WAC
- ⦿ **Commercial Agriculture**, except:
  - Converting forest to agricultural
  - Constructing impervious surfaces
- ⦿ **Oil and gas field** activities
- ⦿ **Pavement maintenance** without upgrading
- ⦿ **Underground Utilities**

# S5. Stormwater Management Program

- ✓ C.1 Public Education and Outreach
- ✓ C.2 Public Involvement
- ✓ C.3 Illicit Discharge Detection and Elimination
- ⦿ C.4 Controlling Runoff from Development
- ✓ C.5 Municipal Operations and Maintenance

Focus on C.4:

C.4: The new permit requires new development regulations, including review and recommendation by the Planning Commission and approval by County Commissioners

# Phase II Permit *Current* Requirements

- ✓ Ordinance to address runoff from construction sites
- ✓ Permitting process with plan review, inspection and enforcement
- ✓ Verify adequate long-term operation and maintenance of post-construction facilities
- ✓ Record of inspections
- ✓ Staff training



# Phase II Permit *Update* Requirements

- ⦿ **Review, revise, and make effective** local development-related codes, rules, standards, and enforceable documents to incorporate and require Low Impact Development (LID)
- ⦿ **Make LID the preferred** and commonly-used approach as outlined in the document *Integrating LID into Local Codes: A Guidebook for Local Governments* (Puget Sound Partnership, 2012)
- ⦿ **Minimize** impervious surface, native vegetation loss, and stormwater runoff

# Phase II Permit *Update* Requirements

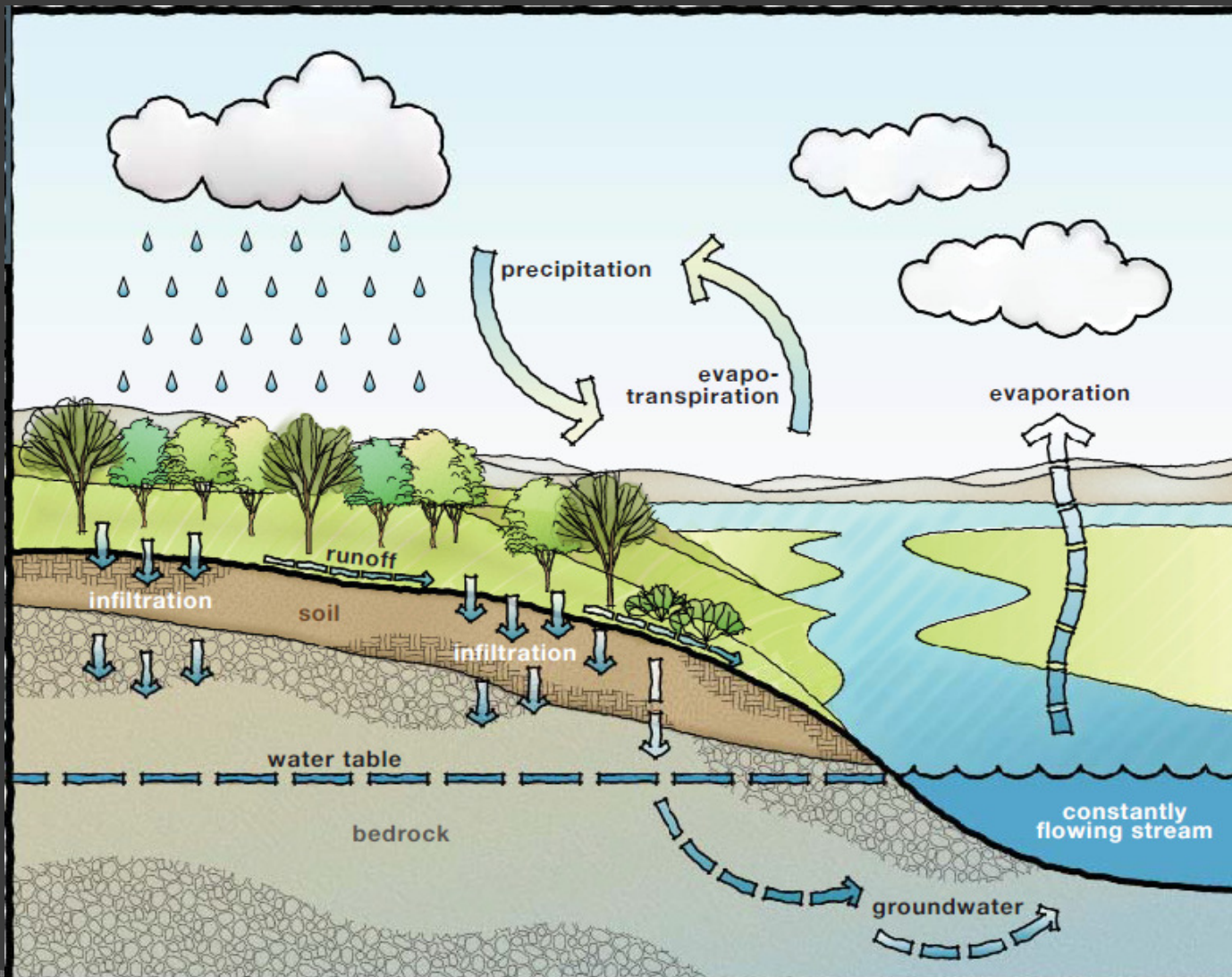
**Submit a summary** of the review and revision process to Ecology, including:

- A list of participants
- **Codes, rules, standards**, and other enforceable documents reviewed
- **Revisions made** to those documents to incorporate and require LID

# Low Impact Development (LID)

- A land development strategy that emphasizes protection and use of on-site natural features to manage stormwater
- Integrates engineered, small-scale stormwater controls into the site design
- Used at the parcel and subdivision scale
- Primary goal: no measurable impacts to receiving waters by maintaining pre-development surface flow volumes and durations

# Natural Water Cycle



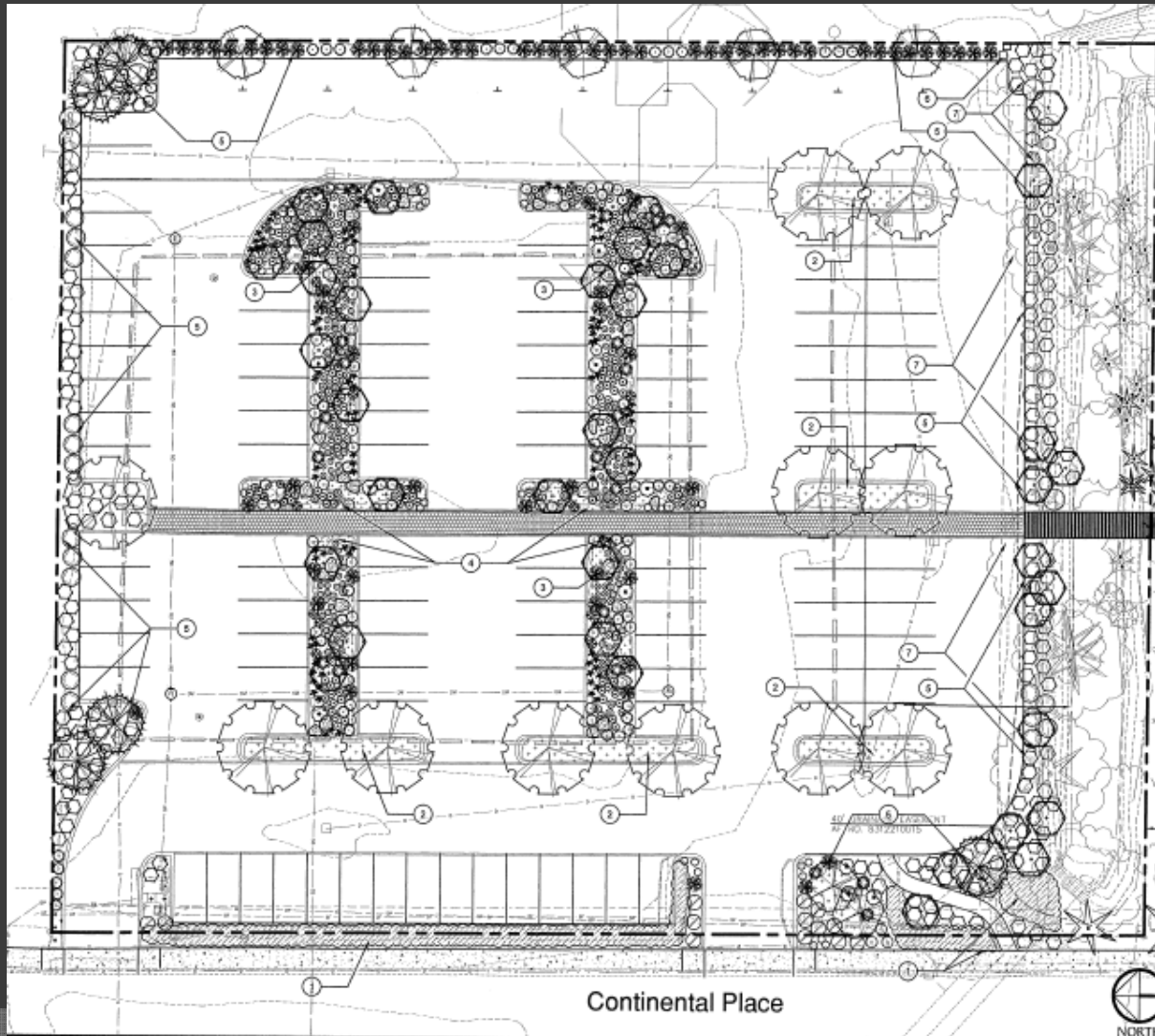
# Skagit County Project Brookings Memorial Rain Garden



# Skagit County Project Street Waste Decant Facility



# Skagit County Project LID demonstration parking lot



# Review

- ◎ Why do this at all?
  - From September presentations on Stormwater:
    - Reduce pollution in rivers and Puget Sound by filtering stormwater
    - Recharge groundwater
    - Moderate stormwater flow, reduce flooding
  - Permit requirement



# Stormwater Code 2015 Update

The screenshot shows a web browser window displaying the Skagit County Planning and Development Services website. The page title is "Stormwater Permit 2015 Code Update". The website header includes the Skagit County logo and the text "Planning and Development Services" with the director's name, Dale Pernulis. A navigation menu contains "Directory", "Find It Here", "Records", and "Contact". A left sidebar lists various services and documents. The main content area is titled "Stormwater Permit 2015 Code Update" and contains a paragraph explaining the update, a list of background documents, a section on how to participate and comment, and a process timeline table.

**Stormwater Permit 2015 Code Update**

Skagit County, along with most other cities and counties in the state, is working to update our Drainage Ordinance and related Definitions in response to the new National Pollution Discharge Elimination System (NPDES) Phase II Stormwater Permit for Western Washington. The new permit became effective on August 1, 2013. It requires us to adopt revised development regulations by December 31, 2015.

**Background Documents**

- US EPA summary of the 1972 Clean Water Act
- RCW Chapter 90.48 RCW, Water Pollution Control Act
- Skagit County Code Chapter 14.32, Drainage
- Puget Sound Partnership, Integrating LID into Local Codes (November 2011)
- Skagit County's Stormwater Management Program
- Stormwater Permit Area Boundary map
- Stormwater fixes could cost billions

**How to Participate & Comment**

The draft changes to the Drainage Ordinance and Definitions will go through the public process for land use regulations required by Skagit County Code Chapter 14.08.

**Process Timeline**

Date	Item
✓ September 9, 2014	Stormwater and LID: study session with Planning Commission
▶ January 6, 2015	Planning Commission work session on NPDES Permit requirements
Spring 2015	Presentation of a proposal to the Planning Commission
Spring/Summer 2015	Planning Commission public hearing at 6pm
two days after public hearing	Written comment period ends
w/n two weeks	Planning Commission deliberations
By end of 2015	Board adopts proposed changes

# Stormwater Code 2015 Update

[Directory](#)

[Find It Here](#)

[Records](#)

[Contact](#)

## Stormwater Permit 2015 Code Update

Skagit County, along with most other cities and counties in the state, is working to update our Drainage Ordinance and related Definitions in response to the new [National Pollution Discharge Elimination System \(NPDES\) Phase II Stormwater Permit for Western Washington](#). The new permit became effective on August 1, 2013. It requires us to adopt revised development regulations by December 31, 2015.

### Background Documents

- [US EPA summary of the 1972 Clean Water Act](#)
- [RCW Chapter 90.48 RCW, Water Pollution Control Act](#)
- [Skagit County Code Chapter 14.32, Drainage](#)
- [Puget Sound Partnership, Integrating LID into Local Codes \(November 2011\)](#)
- [Skagit County's Stormwater Management Program](#)
- [Stormwater Permit Area Boundary map](#)
- [Stormwater fixes could cost billions](#)

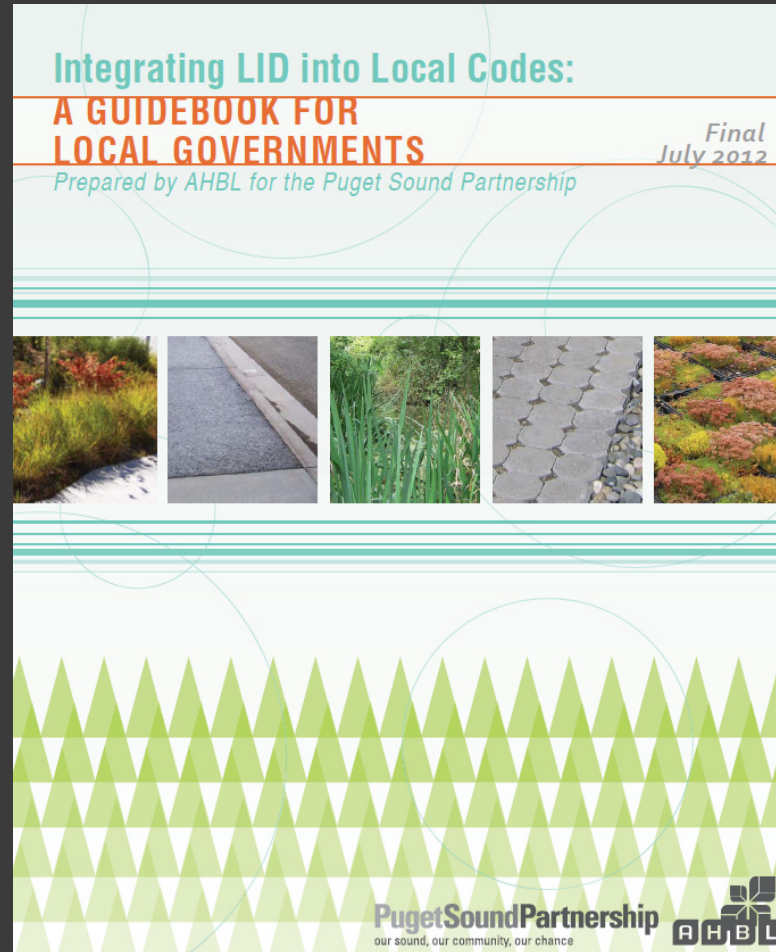
### How to Participate & Comment

The draft changes to the Drainage Ordinance and Definitions will go through the public process for land use regulations required by [Skagit County Code Chapter 14.08](#).

# Website

- ◎ <http://www.skagitcounty.net/Departments/PlanningAndPermit/StormwaterUpdate.htm>

# LID Handbook



# Approach

- Update or add new definitions (e.g. hard surface, development, LID) to SCC 14.04.020, Definitions
- Update SCC 14.32, Drainage to:
  - Rename to Stormwater Management
  - Reorganize chapter to clarify applicability
  - Change language regarding the Stormwater Manual to adopt the 2012 manual countywide (without LID requirements outside NPDES area)
  - Set maximum impervious area
  - Update thresholds to match current manual
  - Add native vegetation requirements
- Modify minimum parking requirements in SCC 14.16

# Timeline

- ✓ Sept. 9, 2014 Stormwater and LID study session with Planning Commission
- January 6, 2015 Planning Commission Work Session on NPDES Permit requirements
- ⦿ Spring 2015- Presentation of a proposal to the Planning Commission
- ⦿ Late Spring 2015- Planning Commission public Hearing
- ⦿ June- July 2015- Planning Commission deliberations
- ⦿ July 2015- BCC deliberation, adoption

# Next Steps

- Staff develop code amendments
- Internal review, consult with stakeholders
- Publish proposal to website
- Written comment period, public hearing
- Planning Commission recommendation
- Board of Commissioners review
- Adoption by July 2015